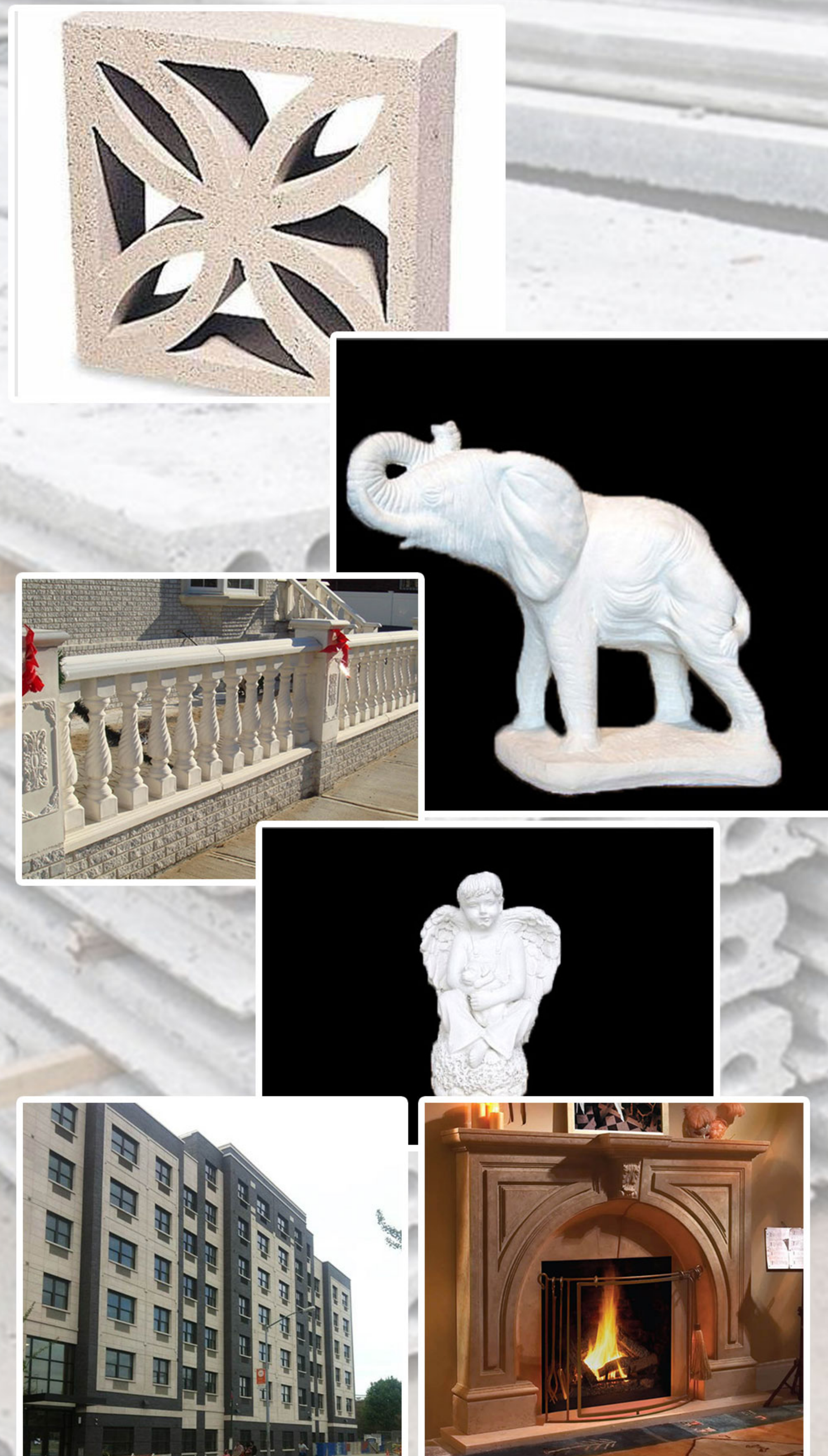


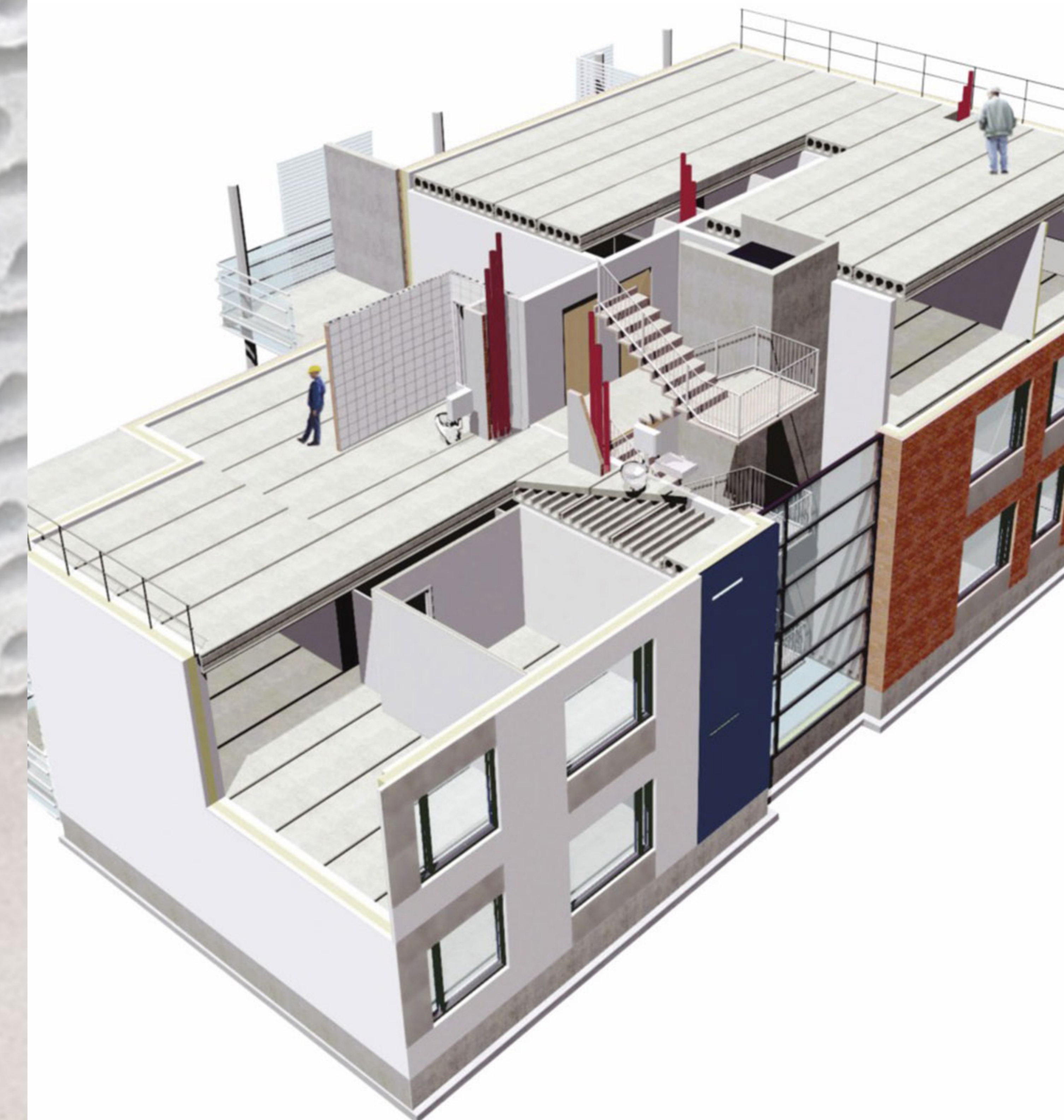
## ARCHITECTURAL & STRUCTURAL PRECAST

Our company specializes in architectural and structural precast. All our precast products are tested at standard 5000 PSI. We accept all projects. We do all our shop drawings, designs, and manufacturing in house. So that make us very competitive with prices for our clients. We manufacture up to 60 different available colors.



**MOHAN'S PRECAST**  
ARCHITECTURAL & STRUCTURAL PRECAST

## ARCHITECTURAL & STRUCTURAL PRECAST



**MOHAN'S PRECAST**  
ARCHITECTURAL & STRUCTURAL PRECAST

**1-855-5-PRECAST**  
**(718) 739-9199**

Location : 95-28 150th Street, Jamaica, NY 11435  
E-mail : MOHANSPRECAST@OUTLOOK.COM



**MOHAN'S PRECAST**  
ARCHITECTURAL & STRUCTURAL PRECAST

**1-855-5-PRECAST**  
**(718) 739-9199**

Location : 95-28 150th Street, Jamaica, NY 11435  
E-mail : MOHANSPRECAST@OUTLOOK.COM

**SHOP DRAWING ARE  
DONE IN HOUSE!!!**

NEW YORK CITY SCHOOL CONSTRUCTION  
AUTHORITY





**MOHAN'S PRECAST**  
ARCHITECTURAL & STRUCTURAL PRECAST

Mohan's Precast USA, Inc. manufactures a full line of architectural and structural precast. Some of our products are as follows: Balustrade Systems, Lintels, Cornice, Quoins, Keystones, Window Surrounds, Step Treads, Pier Caps, Figurines/Statues, Columns, and much more.

All our products are available in standard dimensions, and also custom dimensions.

We also offer a wide variety of colors.

Fluted Column range from diameters of 10", 12", 14", 16", 18", 20", & 22"

**We accept all custom projects!!!**  
**We accept all major credit cards!!!**

**SHOP DRAWING AND  
MANUFACTURING ARE DONE IN  
HOUSE!!!**  
**EVERY PROJECT IS GIVEN A LAYOUT  
PLAN FOR INSTALLATION  
PURPOSES FOR YOUR OWN  
INSTALLATION NEEDS!!**

**ALL PIECES ARE LABEL AND  
TAGGED ON LAYOUT PLAN AND  
PRODUCTS TO MATCH FOR EACH  
ELEVATION!**

**MOHAN'S PRECAST USA, INC.  
SPECIALIZES IN PRECISION AND  
QUALITY FOR ALL YOUR PRECAST  
PROJECTS.**  
**LET MOHAN'S PRECAST USA STAFF  
TAKE CONTROL OF YOUR  
PROJECT!!**